



# Dale Community Primary and Stonehill Nursery Federation

## Supporting Pupils with Medical Conditions Policy

**Head Teacher:** Louise Foster

**Chair of Governors:** Russell Langley

**Policy Approved by:** Governors Behaviour and Safety Committee

Policy reviewed by: Governors Behaviour and Safety Committee Date: 13 February 2018

Policy reviewed by: Governors Behaviour and Safety Committee Date: 24 May 2022

Policy reviewed by: Governors Behaviour and Safety Committee Date:

Policy reviewed by: Governors Behaviour and Safety Committee Date:

## SUPPORTING PUPILS WITH MEDICAL CONDITIONS

<b>Contents</b>	<b>Page</b>
1. Aims	2
2. Legislation and statutory responsibilities	2
3. Roles and responsibilities	2
4. Equal opportunities	3
5. Being notified that a child has a medical condition	4
6. Individual healthcare plans	5
7. Managing medicines	6
8. Emergency procedures	6
9. Training	6
10. Record keeping	7
11. Complaints	7
12. Links to other policies	7

### **Appendices**

1. Individual Health Care Plan Template

## 1. Aims

This policy aims to ensure that:

- Pupils, staff and parents understand how our school will support pupils with medical conditions
- Pupils with medical conditions are properly supported to allow them to access the same education as other pupils, including school trips and sporting activities

The governing body will implement this policy by:

- Making sure sufficient staff are suitably trained
- Making staff aware of pupil's condition, where appropriate
- Making sure there are cover arrangements to ensure someone is always available to support pupils with medical conditions
- Providing supply teachers with appropriate information about the policy and relevant pupils
- Developing and monitoring individual healthcare plans (IHPs)

**The named person with responsibility for implementing this policy is the Inclusion Manager.**

## 2. Legislation and Statutory Responsibilities

This policy meets the requirements under [Section 100 of the Children and Families Act 2014](#), which places a duty on governing bodies to make arrangements for supporting pupils at their school with medical conditions.

It is also based on the Department for Education's statutory guidance: [Supporting pupils at school with medical conditions](#).

## 3. Roles and Responsibilities

### 3.1 The Governing Body

The Governing Body has ultimate responsibility to make arrangements to support pupils with medical conditions. The governing body will ensure that sufficient staff have received suitable training and are competent before they are responsible for supporting children with medical conditions.

### 3.2 The Head Teacher

The Head Teacher will:

- Make sure all staff are aware of this policy and understand their role in its implementation
- Ensure that there is a sufficient number of trained staff available to implement this policy and deliver against all individual healthcare plans (IHPs), including in contingency and emergency situations
- Take overall responsibility for the development of IHPs
- Make sure that school staff are appropriately insured and aware that they are insured to support pupils in this way
- Contact the school nursing service in the case of any pupil who has a medical condition that may require support at school, but who has not yet been brought to the attention of the school nurse
- Ensure that systems are in place for obtaining information about a child's medical needs and that this information is kept up to date.

### **3.3 Staff**

Supporting pupils with medical conditions during school hours is not the sole responsibility of one person. Any member of staff may be asked to provide support to pupils with medical conditions, although they will not be required to do so. This includes the administration of medicines.

Those staff who take on the responsibility to support pupils with medical conditions will receive sufficient and suitable training, and will achieve the necessary level of competency before doing so.

Teachers will take into account the needs of pupils with medical conditions that they teach. All staff will know what to do and respond accordingly when they become aware that a pupil with a medical condition needs help.

In case of conditions with potential life-threatening implications, the information will be available and accessible to everyone

### **3.4 Parents**

Parents will:

- Provide the school with sufficient and up-to-date information about their child's medical needs
- Be involved in the development and review of their child's IHP and may be involved in its drafting
- Carry out any action they have agreed to as part of the implementation of the IHP e.g. provide medicines and equipment.

### **3.5 Pupils**

Pupils with medical conditions will often be best placed to provide information about how their condition affects them. Pupils should be fully involved in discussions about their medical support needs and contribute as much as possible to the development of their IHPs. They are also expected to comply with their IHPs.

### **3.6 School Nurses and other Healthcare Professionals**

Healthcare professionals, school nurses or parents will notify the school when a pupil has been identified as having a medical condition that will require support in school. This will be before the pupil starts school, wherever possible.

Healthcare professionals, such as GPs and paediatricians, will liaise with the schools nurses and notify them of any pupils identified as having a medical condition.

## **4. Equal Opportunities**

Dale Community Primary and Stonehill Nursery are clear about the need to actively support pupils with medical conditions to participate in school trips and visits, or in sporting activities, and not prevent them from doing so.

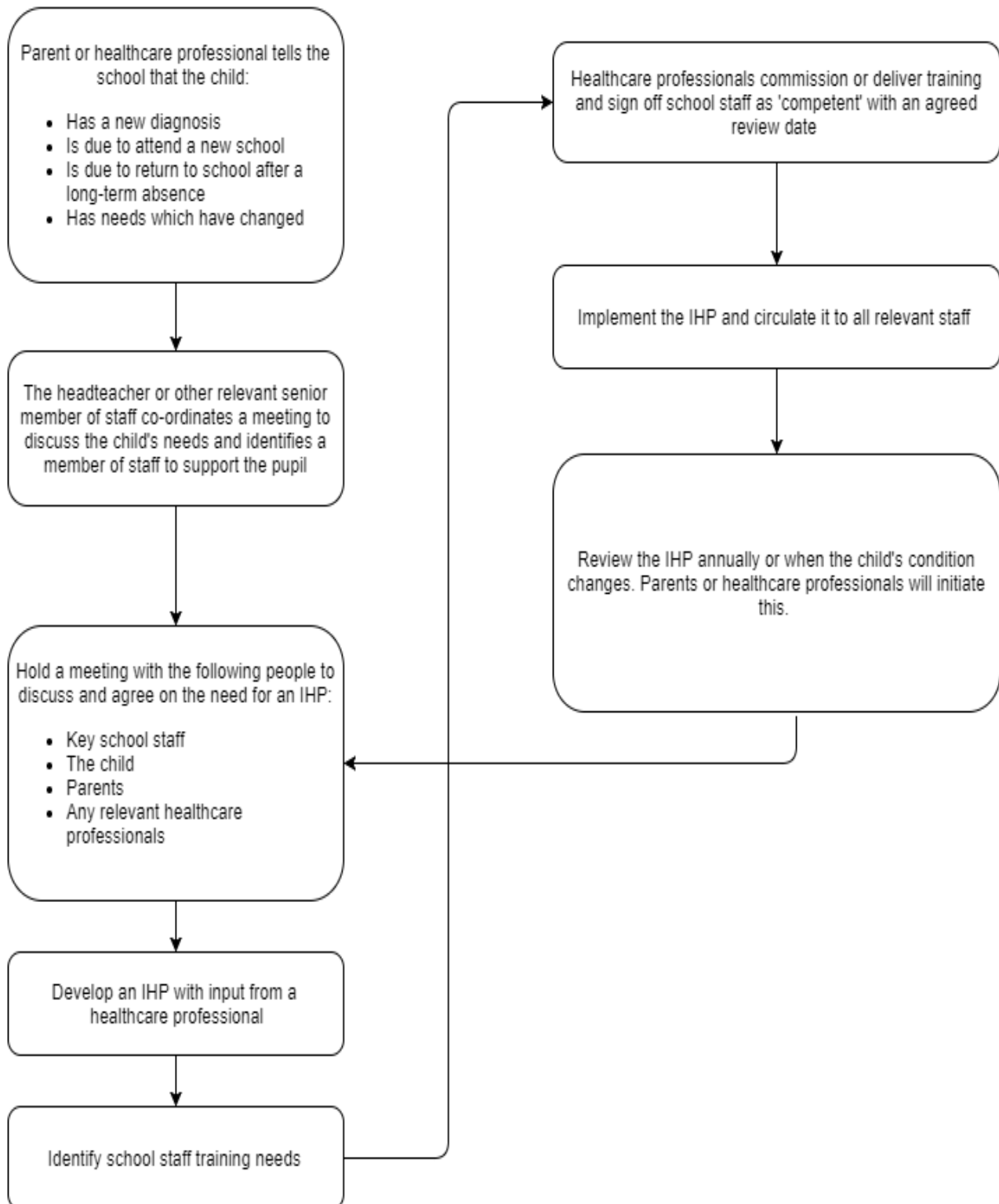
The school will consider what reasonable adjustments need to be made to enable these pupils to participate fully and safely on school trips, visits and sporting activities.

Risk assessments will be carried out so that planning arrangements take account of any steps needed to ensure that pupils with medical conditions are included. In doing so, pupils, their parents and any relevant healthcare professionals will be consulted.

## 5. Being Notified that a Child has a Medical Condition

When the school is notified that a pupil has a medical condition, the process outlined below will be followed to decide whether the pupil requires an IHP.

The school will make every effort to ensure that arrangements are put into place within 2 weeks, or by the beginning of the relevant term for pupils who are new to our school.



## 6. Individual Healthcare Plans

The Head Teacher has overall responsibility for the development of IHPs for pupils with medical conditions. This has been delegated to the Inclusion Managers.

Plans will be reviewed at least annually, or earlier if there is evidence that the pupil's needs have changed.

Plans will be developed with the pupil's best interests in mind and will set out (see Appendix 1):

- What needs to be done
- When
- By whom

Not all pupils with a medical condition will require an IHP. It will be agreed with a healthcare professional and the parents when an IHP would be inappropriate or disproportionate. This will be based on evidence. If there is not a consensus, the Head Teacher will make the final decision.

Plans will be drawn up in partnership with the school, parents and a relevant healthcare professional, such as the school nurse, specialist or paediatrician, who can best advise on the pupil's specific needs. The pupil will be involved wherever appropriate.

IHPs will be linked to, or become part of, any statement of special educational needs (SEN) or education, health and care (EHC) plan. If a pupil has SEN but does not have a statement or EHC plan, the SEN will be mentioned in the IHP.

The level of detail in the plan will depend on the complexity of the child's condition and how much support is needed. The Head Teacher and the Inclusion Managers, will consider the following when deciding what information to record on IHPs:

- The medical condition, its triggers, signs, symptoms and treatments
- The pupil's resulting needs, including medication (dose, side effects and storage) and other treatments, time, facilities, equipment, testing, access to food and drink where this is used to manage their condition, dietary requirements and environmental issues, e.g. crowded corridors, travel time between lessons
- Specific support for the pupil's educational, social and emotional needs. For example, how absences will be managed, requirements for extra time to complete exams, use of rest periods or additional support in catching up with lessons, counselling sessions
- The level of support needed, including in emergencies. If a pupil is self-managing their medication, this will be clearly stated with appropriate arrangements for monitoring
- Who will provide this support, their training needs, expectations of their role and confirmation of proficiency to provide support for the pupil's medical condition from a healthcare professional, and cover arrangements for when they are unavailable
- Who in the school needs to be aware of the pupil's condition and the support required
- Arrangements for written permission from parents and the Head Teacher for medication to be administered by a member of staff, or self-administered by the pupil during school hours

- Separate arrangements or procedures required for school trips or other school activities outside of the normal school timetable that will ensure the pupil can participate, e.g. risk assessments
- Where confidentiality issues are raised by the parent/pupil, the designated individuals to be entrusted with information about the pupil's condition
- What to do in an emergency, including who to contact, and contingency arrangements.

## **7. Managing Medicines**

There are no legal duties that require schools to administer medicines. However medicines may need to be brought in to the school setting when essential or beneficial to a child's health and well-being.

Please refer to the school's Administration of Medication Policy for further details.

## **8. Emergency procedures**

Staff will follow the school's normal emergency procedures (for example, calling 999). All pupils' IHPs will clearly set out what constitutes an emergency and will explain what to do.

If a pupil needs to be taken to hospital, staff will stay with the pupil until the parent arrives, or accompany the pupil to hospital by ambulance.

## **9. Training**

Staff who are responsible for supporting pupils with medical needs will receive suitable and sufficient training to do so.

The training will be identified during the development or review of IHPs. Staff who provide support to pupils with medical conditions will be included in meetings where this is discussed.

The relevant healthcare professionals will lead on identifying the type and level of training required and will agree this with the Head Teacher and Inclusion Manager. Training will be kept up to date.

Training will:

- Be sufficient to ensure that staff are competent and have confidence in their ability to support the pupils
- Fulfil the requirements in the IHPs
- Help staff to have an understanding of the specific medical conditions they are being asked to deal with, their implications and preventative measures.

Healthcare professionals will provide confirmation of the proficiency of staff in a medical procedure, or in providing medication.

All staff will receive training so that they are aware of this policy and understand their role in implementing it, for example, with preventative and emergency measures so they can recognise and act quickly when a problem occurs. This will be provided for new staff during their induction.

## **10. Record Keeping**

The Governing Body will ensure that written records are kept of all medicine administered to pupils. Parents will be informed if their child has been unwell at school.

IHPs are kept in a readily accessible place which all staff are aware of.

## **11. Complaints**

Parents with a complaint about their child's medical condition should discuss these directly with the Inclusion Manager in the first instance. If the Inclusion Manager cannot resolve the matter, they will direct parents to the school's complaints procedure.

## **12. Links to other Policies**

This policy links to the following policies:

- Accessibility plan
- Child Protection and Safeguarding
- Complaints Procedure
- Equality and Diversity
- Health and Safety
- Special Educational Needs and Disabilities.



# Individual Health Care Plan

Dale Community Primary School / Stonehill Nursery School (\*delete as appropriate)

Child's name

Group / class / form

Date of birth

Child's address

Medical diagnosis or condition

Date

Review date


## Family Contact Information

Name	
Phone no.	Home
	Mobile
	Work
Relationship to child	
Other contact name	
Phone no.	Home
	Mobile
	Work
Relationship to child	

## Clinic / Hospital Contact

Name

Phone no.


## G.P.

Name

Phone no.


Who is responsible for providing support in school?

--

Describe medical needs and give details of child's symptoms, triggers, signs, treatments, facilities, equipment or devices, environmental issues etc.

Name of medication, dose, method of administration, when to be taken, side effects, contra-indications, administered by / self-administered with / without supervision

Daily care requirements

Specific support for the pupil's educational, social and emotional needs

Arrangements for school visits / trips etc.

Other information

Describe what constitutes an emergency and the action to take if this occurs

Person responsible in an emergency (state if different for off-site activities)

Plan developed with

Staff training needed / undertaken - who, what, when

Form copied to